

# ADePT 4.0 Installation Instructions



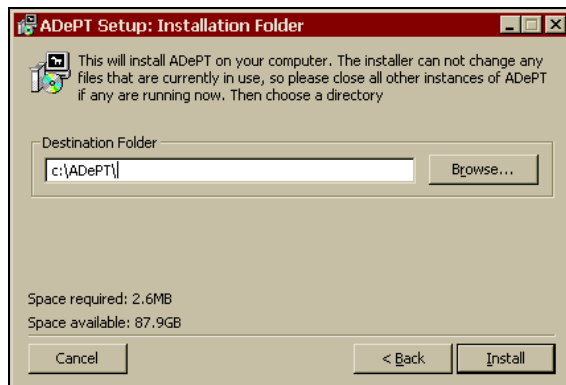
See page 2 of these instructions for the description of prerequisites for ADePT.

ADePT 4.0 installation file adept\_install.exe is available from our web page: [www.worldbank.org/adept](http://www.worldbank.org/adept)



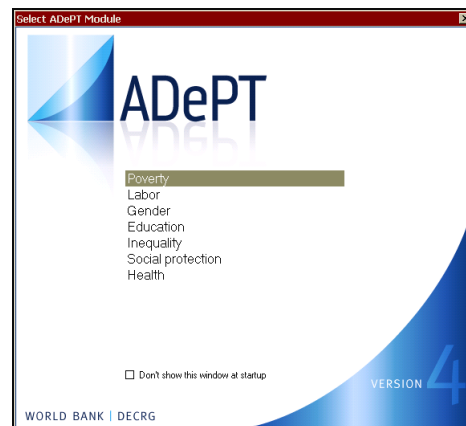
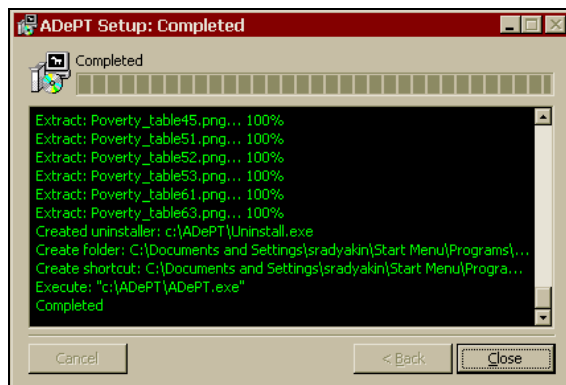
To save this file to disk, right-click it with the mouse, select "Save target as..." from the menu and specify the folder on your disk where you want it to be saved. After the file is downloaded, execute it. ADePT installation will display the License Agreement.

You have to accept the license agreement in order to proceed.



The installation wizard then asks, where should ADePT be installed. Note that you must have permissions to write to this directory during installation and when ADePT is running. Use the <Browse...> button to specify the folder or type the path in the "Destination Folder" box.

Click the <Install> button to start copying the files. After installation is completed (message "Completed" is in the messages window) you can close the installation wizard. ADePT program will start automatically.



## Prerequisites

Note that the installation of these applications may require administrative privileges.

1. ADePT is a Windows application, it requires *Microsoft Windows* to be installed on your computer (<http://www.microsoft.com/windows>). It has been tested with Microsoft Windows XP, Windows Server and Windows Vista and will work in 32 and 64-bit environments.
2. ADePT is a .Net application and requires *Microsoft .Net Framework 2.0* or later to be installed before installing ADePT. Most modern operating systems from Microsoft come with .Net Framework as part of the system. To check if your computer has .Net Framework installed, navigate Windows Explorer to the folder where Windows is installed (typically C:\Windows\), then proceed to folder `Microsoft.NET`, then `Framework`. There will be several subfolders in this folder with names like 1.0.3705, 1.1.4322 and so on. The largest version shows the newest version of installed .Net Framework. If you don't have any of these folders on your disk, your computer does not have Microsoft .Net Framework. If your system does not contain .Net Framework 2.0 or later, please download and install .Net Framework from the Microsoft's website, otherwise ADePT will fail to start with an error message "The application failed to initialize properly (0xc0000135). Click OK to terminate the application." or its equivalent in the local language.

At the time of this writing, the latest available version of the .Net Framework is 3.5 and service packs to it. Microsoft .Net Framework 3.5 can be downloaded from this site:

<http://www.microsoft.com/downloads/details.aspx?familyid=333325FD-AE52-4E35-B531-508D977D32A6&displaylang=en>

3. *Microsoft Office for Windows* is required to display the results of the computations in *Microsoft Excel* application (<http://office.microsoft.com/>).
4. ADePT requires that *Stata* application (<http://www.stata.com/>) is installed on the user's computer before installing ADePT. At least the "Intercooled" flavor of Stata is required (Small Stata is not sufficient). Consult the "Installation" chapter in the "Getting Started With Stata" manual (chapter 1) for instructions on how to set up, upgrade and update Stata.