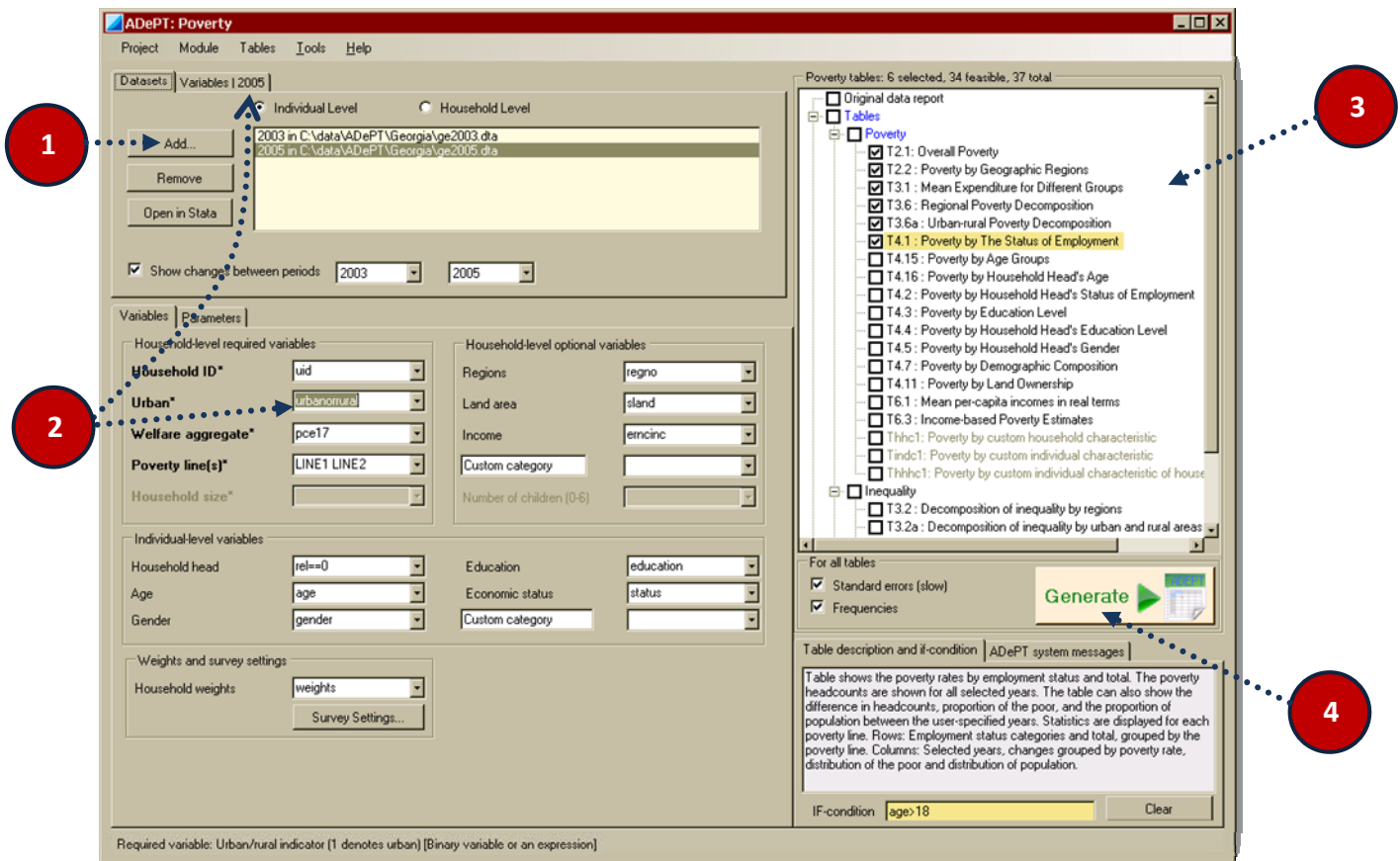


# Getting Started with ADePT 4.0



ADePT 4.0 provides all module controls in one dialog:



1. [Click <Add...>](#) in the datasets control to add a dataset for analysis. Enter dataset's label when asked by ADePT. Repeat this for each dataset.
2. Click "Variables" tab and [drag and drop variables](#) to the fields below. Fill in the **required** fields first. Watch the hints for each field in the status line at the bottom of the screen.
3. [Select individual tables](#) (graphs) or their groups by clicking checkboxes located next to them. Tables' descriptions are displayed in the lower right corner of the dialog.
4. [Click <Generate>](#) to start the analysis and report generation. Completed report with all tables, graphs and a table of contents is displayed in a new Microsoft Excel window.

\*To switch to a different module, select the module name from the module menu.