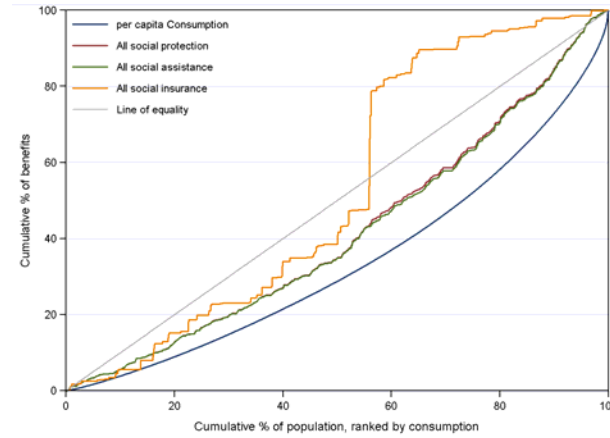


What's new in ADePT v3.0 ?

ADePT version 3.0 delivers two new modules “*Gender*” and “*Social Protection*”.

The *Social Protection* module examines how the beneficiaries and/or benefits of social protection programs are distributed across quintiles, deciles or other population groups. It creates up to 23 standardized tables and graphs that examine how equitable, efficient and effective the programs are in protecting the poorest, both in isolation and in combination. ADePT SP performs sensitivity analysis with different consumption counterfactuals; generates estimates with correct standard errors; and generates a number of statistics that allow comparisons between survey and administrative data. It can also be used to simulate the distributional impact of new or restructured programs.



The *Gender* module focuses on the four important topics of poverty, education, employment, and use of services, while using gender as the first level of analysis. With minimal requirements for input information and extensive checks of all variables and parameters ADePT Gender generates standard comparable tables and graphs and can server as a starting point or rapid assessment of the gender inequality in a country.

We have also revised the other modules and further integrated them with each other. Please note that ADePT is distributed as one package and all modules are installed simultaneously. A module-choice menu can be called by typing `adept` without a module name:



We have addressed a number of issues with the program's interface raised by the users and improved the program's reliability.

Existing users will automatically receive a notification that a new version of ADePT is available after they run the older version. New users are welcomed to try ADePT. It is distributed for free, but requires Stata for Windows to be installed on the user's computer. To install ADePT v3.0, please type in Stata's command line:

```
net install adept, replace from(http://siteresources.worldbank.org/INTPOVRES/Resources)
```

Additional information and program documentation is available at ADePT's homepage:

www.worldbank.org/adept