

## Alternative ADePT Installation

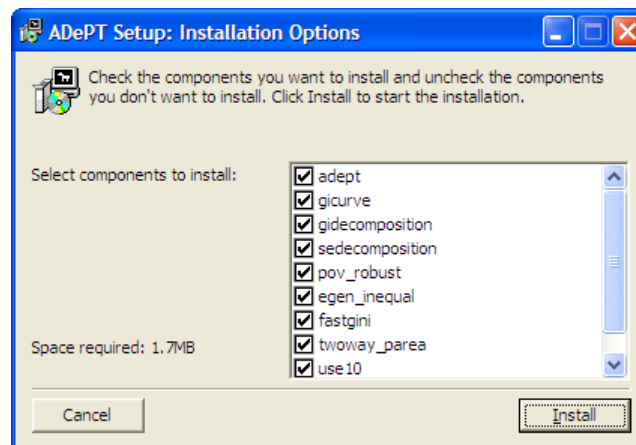
### *Whom is this installation for?*

Use this alternative method of installation if:

1. The computer you need ADePT to work on does not have internet connection.
2. The computer you are using is experiencing problems accessing Stata packages located on our page, but can browse text and download other files.

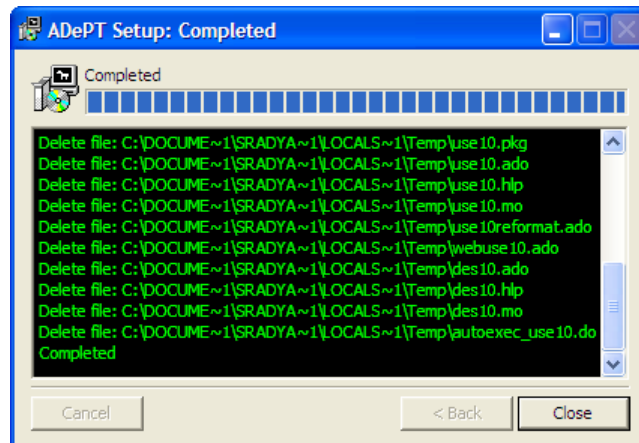
### *Installation instructions*

1. The web page where these instructions are located contains a link to a file **ADePT.exe**. Right-click this file and select “Save target as...” in your browser or otherwise download the file with available download tools.
2. If you need to perform installation on a different computer (for example, one that does not have an internet connection) copy this file on a portable media (USB flash memory drive, or a floppy disk).
3. Run installation file **ADePT.exe**. The following screen will appear.



4. By default all necessary components are selected. Do not unselect any of the components unless you have a reason for that (for example, you may want to preserve an existing version of the component, or you were instructed by our team to not install a specific component).
5. You must have Stata installed to continue.

6. Press "**Install**" and the installer will setup all the components to be available in your Stata.
7. During installation process Stata will be called for each component being set up and this may take a couple of minutes.
8. The installer will tell you when it finishes installation, wait for the "**completed**" line in the messages window:



9. To start ADePT, launch Stata as usual, then type: `adep` in the command line.

Technical note for users with multiple installations of Stata on the same computer: ADePT will be installed in that Stata that is currently associated with .do-files on your computer.